



**J.E. ANDERSON
& ASSOCIATES**
SURVEYORS - ENGINEERS

TEL: 250 - 758 - 4631 FAX: 250 - 758 - 4660
NANAIMO - VICTORIA - PARKSVILLE

SKETCH PLAN

File: 88846

Civic: 3750 Polaris Drive, Nanaimo

Legal: Lot 3, District Lot 39, Wellington District, Plan 14457.

Dimensions are in metres and are derived from Plan field survey.

This sketch does not constitute a redefinition of the legal boundaries hereon described and is not to be used in any matter which would assume same.

This sketch plan has been prepared in accordance with the Professional Reference Manual and is certified correct this 12th day of May, 2017.

Douglas Holme C14K11 Digitally signed by Douglas Holme C14K11
Date: 2017.05.30 14:01:04 -07'00'

This document is not valid unless originally signed and sealed or digitally signed by BCLS

B.C.L.S.



© Copyright 2017 J.E. Anderson & Associates. All rights reserved. No person may copy, reproduce, transmit or alter this document in whole or in part without the consent of the signatory.

The signatory accepts no responsibility or liability for any damages that may be suffered by a third party as a result of any decision made, or actions taken based on this document.

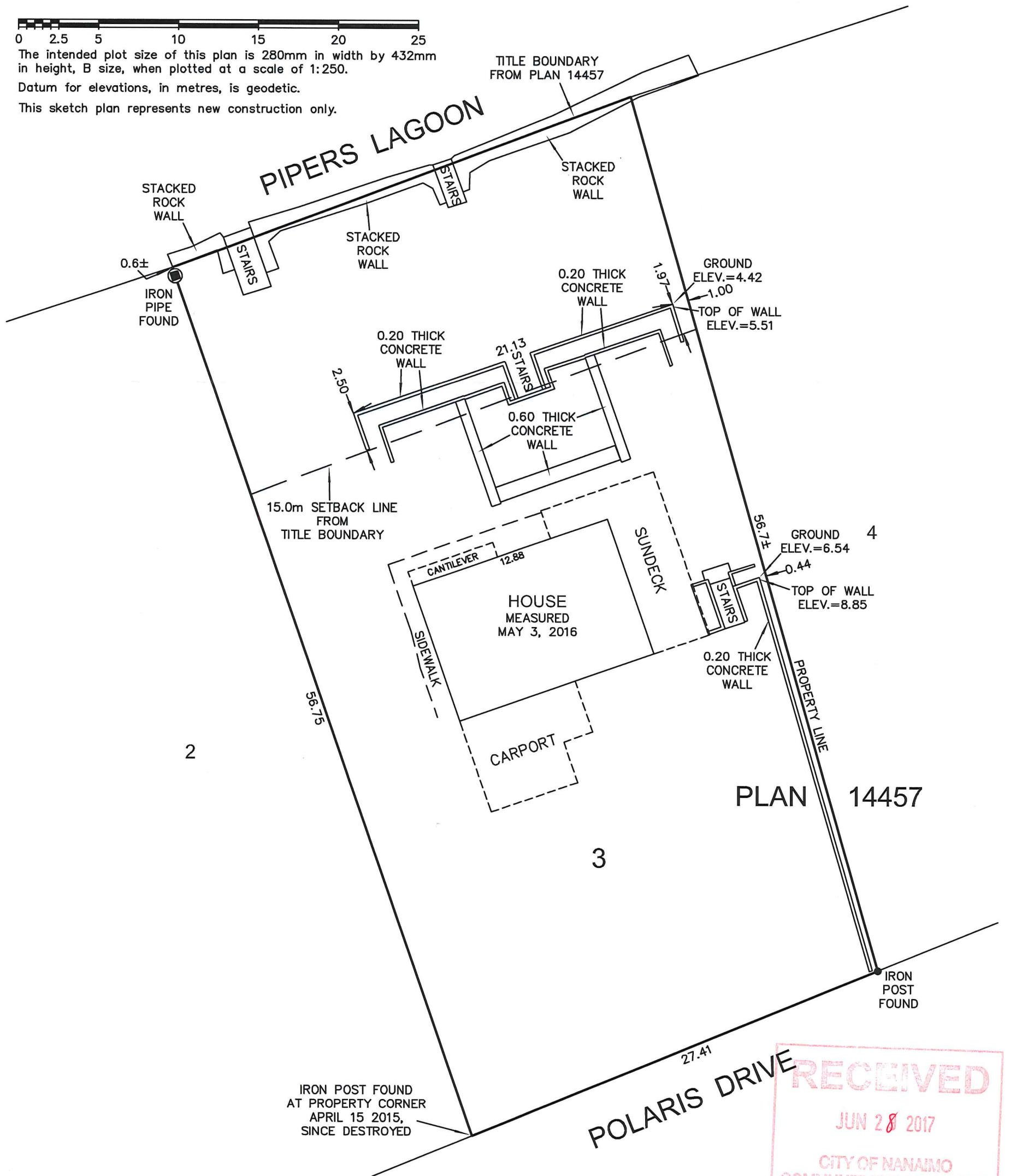
Subject to charges, legal notations, and interests shown on: Title No. CA3651648 (P.I.D. 004-417-992)



The intended plot size of this plan is 280mm in width by 432mm in height, B size, when plotted at a scale of 1:250.

Datum for elevations, in metres, is geodetic.

This sketch plan represents new construction only.



RECEIVED
JUN 28 2017
CITY OF NANAIMO
COMMUNITY DEVELOPMENT